

JUNE 19, 2022 • THE MOST HOLY BODY AND BLOOD OF CHRIST

ST. MARY'S VISITATION

Catholic Parish  Elm Grove, WI

OUR PARISH

MASSSES

Sunday Mass Schedule

Saturday Vigil..... 4pm
Sunday..... 7:30am, 9am, 10:30am,
and 2pm

Daily Mass Schedule

Monday- Friday 6:30am
Tuesday and Friday 8am
(during school year only)
Saturday 8am

RECONCILIATION

Wednesdays 7am
Fridays 2-5pm
Saturday 8:30am

HOLY DAYS

Mary Mother of God..... Jan. 1
Assumption..... Aug. 15
All Saints Nov. 1
Immaculate Conception..... Dec. 8
Christmas Dec. 25
*Mass schedules for Holy Days are
announced in the bulletin.*

PARISH ADDRESS

1260 Church Street, Elm Grove, 53122
Phone: 262-782-4575
Website: stmaryeg.org

PARISH OFFICE HOURS

Monday-Thursday ... 9am-3:30pm
Friday..... 9am-noon

SCHOOL ADDRESS

13000 Juneau Blvd. Elm Grove, 53122
Phone: 262-782-7057
Website: stmaryeg.org

ST. MARY'S THRIFT SHOP

262-784-6644
Mon/Tues/Thurs/Fri..... 9am-4pm
Saturdays. 9am-1pm



THE MOST HOLY BODY AND BLOOD OF CHRIST

Then taking the five loaves and the two fish, and looking up to heaven, he said the blessing over them, broke them, and gave them to the disciples to set before the crowd. They all ate and were satisfied. And when the leftover fragments were picked up, they filled twelve wicker baskets. - Lk 9:16-17

Excerpts from the Lectionary for Mass ©2001, 1998, 1970 CCD.

©LPI

MISSION STATEMENT

We are a community of believers who strive to be faithful and to teach the truth of the Roman Catholic Church. We see beauty in the sacramental life of the Church, especially in the Holy Sacrifice of the Mass and in adoration of Jesus in the Blessed Sacrament. We promote goodness in this world, following the example of our Blessed Mother, our Lady of the Visitation, by serving the needs of others.

THE PARISH

**1260 Church Street
Elm Grove, WI 53122**

Phone.....262-782-4575
Thrift Shop262-784-6644
Website.....stmaryeg.org

STAFF

Pastor.....Fr. Peter Berger
Associate Pastor... Fr. Patrick Behling
pbehling@stmaryeg.org

Assisting Priest Fr. David Filut

Deacon Richard Piontek

Deacon Dick Niggemann
niggemannr@archmil.org

Director of Finance Cheryl Peters
cpeters@stmaryeg.org

Financial Assistant Monica Hiller
mhiller@stmaryeg.org

Human Concerns..... Mary Sue Protz
msprotz@stmaryeg.org

Communications..... Nora Mihm
nmihm@stmaryeg.org

Administrative Asst..... Chris Kinzy
ckinzy@stmaryeg.org

Director of Music..... Julie Cucunato
jcucunato@stmaryeg.org

Music Assistant.....Julie Huebner
jhuebner@stmaryeg.org

Organist.....Michel Shestak
mshestak@stmaryeg.org

Office Manager..... Liz Steybe
lsteybe@stmaryeg.org

Catholic Formation

Director Josh Dieterich
jdieterich@stmaryeg.org

Co-Director Erica Nelson
enelson@stmaryeg.org

Cemetery Sexton.....Heidi Steigerwald
hsteigerwald@stmaryeg.org

Thrift Shop..... Terri Maciejewski
tmaciejewski@stmaryeg.org

Receptionist.....Heidi Steigerwald
hsteigerwald@stmaryeg.org

Receptionist..... Bernadette Stephens
bstephens@stmaryeg.org

Trustee..... Gordon Giampietro
Trustee..... James Carrig

THE SCHOOL

**13000 Juneau Blvd.
Elm Grove, WI 53122**

Phone.....262-782-7057
Website..... stmaryeg.org

Principal..... Mary Tretow
mtretow@stmaryeg.org

GOOD GRIEF CLASS BEGINS IN AUGUST

Losing a loved one can be one of the most difficult, painful things we experience in our lives. To help people through their grief journey, St. Mary's offers a 12 week "Good Grief" support group led by certified Grief Counselor, Deacon Tom Binder. Previous participants have experienced significant healing and have rediscovered peace, joy, and love in their lives.

If you're ready to move forward in your grief journey and smile again, why not join us? You'll be so glad you took this first step.



Good Grief will be held for 12 consecutive weeks on Wednesday mornings, August 17th through November 2nd from 10-11:30am. Class will be held at Becker Ritter Funeral Home, 14075 W North Ave., Brookfield. The class is free of charge.

A 12-week commitment is very important. Class size is limited, and registration is required. For more information, contact Mary Sue Protz, msprotz@stmaryeg.org or 262-782-4575.

GUIDE BOOK & DIRECTORY ADVERTISING OPPORTUNITY

We are in the process of updating our annual SMV Guide Book & Directory. This book contains everything pertinent to our church: the various ministries, organizations and committees plus a complete directory of all members. This book is being provided and direct-mailed to each family at no cost to St. Mary's, and it is again being subsidized by local businesses that advertise. If you own or manage a business and would like to find out about advertising in our book, please contact Brenda Tolbert, Guide Book Publishing, 314-745-4220. Recent survey results by Guide Book Publishing show that 92.1% of families would rather patronize a Guide Book & Directory advertiser over a non-advertiser. It "will pay" to advertise in our new Guide Book & Directory.

UPDATE YOUR MEMBERSHIP INFORMATION

Please make sure we have your family membership record accurate. Are there any changes, additions or deletions that may have occurred in your family over the past year? Have you changed your phone number? Have you moved? Are all of your children still at home and are they all included in your membership record? Do you want your record published? If you have not already notified the Parish Office about changes to your record, please let us know now so that the information in the Guide Book & Directory is correct. Visit our website to complete an update form, www.stmaryeg.org/update-my-information.html or contact Mary Sue at the Parish Office, 262-782-4575. Thank you for your help!

PRAYER SHAWL MINISTERS

Our inventory of prayer shawls and baptismal blankets is running low. Could you kindly help us replenish our supply? Please stop in the Parish Office and pick up yarn or patterns for your next project. We have various colors available for prayer shawls (solid color shawls preferred) and white yarn for baptismal blankets. If you have not knit or crocheted for us before and would like to join this ministry, contact Mary Sue at the Parish Office, 262-782-4575. Thank you for dedicating your time, talent and prayers!



MASS INTENTIONS

Monday, June 20, Weekday

6:30am † Lon Anderson

Tuesday, June 21, Saint Aloysius Gonzaga, Religious

6:30am † James and Mary Cosgrove

Wednesday, June 22, Weekday

6:30am † John Dalton, Sr.

Thursday, June 23, The Nativity of Saint John the Baptist

6:30am † Poor Souls in Purgatory

Friday, June 24, The Most Sacred Heart of Jesus

6:30am † Stan Merkel

Saturday, June 25, The Immaculate Heart of the Blessed Virgin Mary

8:00am † Dominic Foglia

4:00pm † Michael and Cody Schoos

Sunday, June 26, Thirteenth Sunday in Ordinary Time

7:30am † Phoebe Fleck

9:00am † Roman Pauly

10:30am † Mary Cosgrove

2:00pm Parishioners (Latin Mass)

READINGS

Readings for the week of June 19, 2022

Sunday: Gn 14:18-20/Ps 110:1, 2, 3, 4 [4b]/1 Cor 11:23-26/
Lk 9:11b-17

Monday: 2 Kgs 17:5-8, 13-15a, 18/Ps 60:3, 4-5, 12-13/Mt
7:1-5

Tuesday: 2 Kgs 19:9b-11, 14-21, 31-35a, 36/Ps 48:2-3ab,
3cd-4, 10-11/Mt 7:6, 12-14

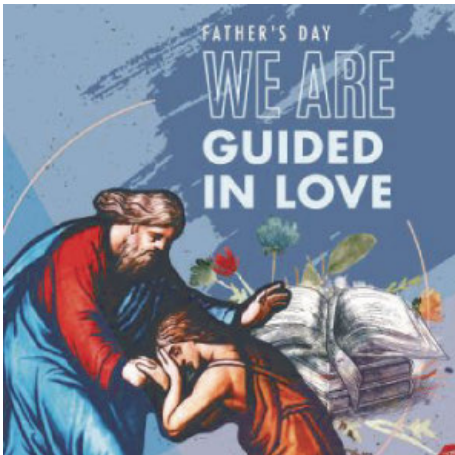
Wednesday: 2 Kgs 22:8-13; 23:1-3/Ps 119:33, 34, 35, 36,
37, 40/Mt 7:15-20

Thursday: Vigil: Jer 1:4-10/Ps 71:1-2, 3-4a, 5-6ab, 15ab
and 17/1 Pt 1:8-12/Lk 1:5-17 *Day:* Is 49:1-6/Ps 139:1b-3, 13-14ab, 14c-15/Acts 13:22-26/Lk 1:57-66, 80

Friday: Ez 34:11-16/Ps 23:1-3a, 3b-4, 5, 6 [1]/Rom 5:5b-11/
Lk 15:3-7

Saturday: Lam 2:2, 10-14, 18-19/Ps 74:1b-2, 3-5, 6-7, 20-21/Lk 2:41-51

Next Sunday: 1 Kgs 19:16b, 19-21/Ps 16:1-2, 5, 7-8, 9-10, 11/Gal 5:1, 13-18/Lk 9:51-62



REGISTRATION & SACRAMENTS

PARISH REGISTRATION

St. Mary's Visitation is always happy to welcome new members! If you are interested in joining the parish, please visit our website. www.stmaryeg.org/grow-with-us.html and complete our registration form. Please contact nmihm@stmaryeg.org with any questions.

BAPTISM PREPARATION

Children ages 6 and under: Those seeking to have children baptized should be registered, active members of St. Mary's Visitation Parish. Parents who request baptism for a child are expected to complete a preparation class. It is offered bi-monthly. Scheduled classes for 2022 include:

Saturday, July 2nd from 10:30-11:30am in church

Saturday, September 3rd from 10:30-11:30am in church

It is generally easier if the preparation is done before the birth of the child. If you have attended a session within the last five years, it is not necessary to retake the class. To schedule a baptism, please view the baptism dates on the parish website, www.stmaryeg.org/baptism. Please contact Liz Steybe at 262-782-4485 or lsteybe@stmaryeg.org for more information or to register for the baptism class.

Children ages 6-12: Please contact Josh Dieterich, phone 262-782-4575 or email jdieterich@stmaryeg.org.

Adults ages 12 and up: Adults who wish to join the Catholic Church and were not baptized can participate in the Rite of Christian Initiation for Adults (RCIA). Please contact Josh Dieterich, Director of Catholic Formation, phone 262-782-4575 or email jdieterich@stmaryeg.org.

THE SACRAMENT OF MATRIMONY

The Catholic Church takes preparation for the Sacrament of Matrimony very seriously. Generally at least 6 months should be allowed for this preparation. Engaged couples themselves should visit our website, www.stmaryeg.org/contact-us.html and go to the weddings section to fill out a Marriage Request Form. Contact Liz Steybe for more information, lsteybe@stmaryeg.org or 262-782-4575.

COMMUNION TO THE HOMEBOUND

This ministry connects St. Mary's Visitation with parishioners who are unable to celebrate Mass with us due to age, illness or physical limitations. Family members are encouraged to participate. Please contact the Parish Office for more information, 262-782-4575.

THE SACRAMENT OF THE SICK

If you know of someone who is in the hospital or is in need of the Sacrament of the Anointing of the Sick, please contact the Parish Office for more information, 262-782-4575.

PARISH CALENDAR

Sunday, June 19

7:30am	Mass
9am	Mass
10:30am	Mass
2pm	Latin Mass

Monday, June 20

6:30am	Mass
9am-noon	Vacation Bible School
9am-4pm	Thrift Shop Open
7:30pm	Opus Dei Evening of Recollection for Men

Tuesday, June 21

6:30am	Mass
9am-noon	Vacation Bible School
9am-4pm	Thrift Shop Open

Wednesday, June 22

Thrift Shop Closed	
6:30am	Mass
7am	Reconciliation
9am-noon	Vacation Bible School
9am	Patriotic Rosary
3pm	Choir Rehearsals, Church

Thursday, June 23

6:30am	Mass
9am-noon	Vacation Bible School
9am-4pm	Thrift Shop Open

Friday, June 24

6:30am	Mass
8:30am	Kiwanis, Senior Center
9am-noon	Vacation Bible School
9am	Holy Dusters
9am-4pm	Thrift Shop Open
2pm	Reconciliation

Saturday, June 25

7am	Recovery Meeting, Senior Center
8am	Mass
8:45am	Reconciliation
9am-1pm	Thrift Shop Open
10am	Opus Dei Mass
4pm	Mass

Sunday, June 26

7:30am	Mass
9am	Mass
10:30am	Mass
2pm	Latin Mass

NEW SPEAKERS IN CHURCH

New speakers have been ordered for the church and are expected to be installed in mid-August. We thank you for your patience as we make these improvements to our church sound system.



In your charity and prayers, please remember the souls of those who have recently died and their families.

Barbara Toohey, Mother of Colleen Toohey



ADORATION CHAPEL

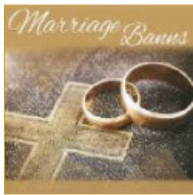
This weekend we celebrate the Feast of the Most Holy Body and Blood of Christ. Jesus gives us His own body and blood in the Eucharist. Take advantage of receiving Him often — daily, if possible. This is the one sacrament that we may receive every day of the year! Take advantage of visiting Jesus often in the St. Mary's Perpetual Adoration Chapel — He is there 24/7. You can stop in at any time, and you can stay for as long as your would like. "It is good for me to be here." This is the thought of many (if not all) who spend time in the awesome presence of Our Lord in the Blessed Sacrament. I'm sure this is also the sentiment of Jesus!

Happy Father's Day! May God bestow His choicest blessings on all fathers. Pray for your earthly father, whether he is still on earth or has passed away, and pay homage to your Heavenly Father by spending time in the Chapel. Remember to pray for the Reverend Fathers who take care of our spiritual needs, especially those who serve our parish and the recently ordained priests. What a debt of gratitude we owe them!

There are three very noteworthy feasts during the coming week: on Thursday, June 23rd we commemorate the Nativity of St. John the Baptist who heralded the coming of Jesus. He pointed out the Lamb of redemption, baptized the very author of Baptism and bore witness to the Faith by his martyrdom. June 24th is the Feast of the Most Sacred Heart of Jesus. and on June 25th we celebrate the Feast of the Immaculate Heart of the Blessed Virgin Mary. Jesus and Mary open their hearts and shower us with endless signs of their love. Show your love for them by attending Mass and visiting the Chapel often, and open your heart to them and to others.

We need coverage:

- Mondays, 4-5pm June, July, August. Call Mary Rhomberg 262-786-1974.
- Wednesdays, 3-4am. Call Joleen Gordon, 262-789-6766.
- Wednesdays, 6-7am. Call Joleen Gordon, 262-789-6766.
- Saturdays, 2-3pm every other week. Call Nancy Frazer, 262-786-0617.
- Saturdays, 10-11pm. Call Nancy Frazer, 262-786-0617.



II Eileen Magnor and Diego Pinga
I Mary Kate Eberle and Austin Barrett



TOUR OUR SCHOOL | MEET OUR TEACHERS | MEET OUR FAMILIES | EXPERIENCE OUR COMMUNITY



Offering both a full day and half day K3 program
NOW ENROLLING

Call to schedule a tour today! **262.782.7057**

VOLLEYBALL REGISTRATION IS OPEN

Registration is now open for 2022-23 St. Mary's Visitation Athletics, beginning with volleyball this fall. Students in 5th-8th grade who are currently enrolled at SMV school as well as Catholic



Formation students are eligible to participate. To register, visit https://www.givecentral.org/SMV_Athletics2. We are also looking to expand our volunteer coaching staff for volleyball, basketball and track. Interested individuals need to be at least 21 years old and safe guarded. If interested send an email to register4athletics@stmaryeg.org.

SMV ATHLETICS HOSTS VOLLEYBALL CAMP

SMV Athletics invites boys and girls in 5th-8th grade this fall to participate in a pre-season volleyball tune-up camp. The camp will be held August 1-4 in the SMV gym. The first session will be held from 10-noon for 5th and 6th graders and the second session from 12:30-2:30 for 7th and 8th graders. Participants must be enrolled in SMV school or Catholic Formation program. The cost is \$50/player and includes a t-shirt. To register or for more information, visit https://www.givecentral.org/SMV_volleyballcamp.

SMV SPONSORED Cantor Training Camp

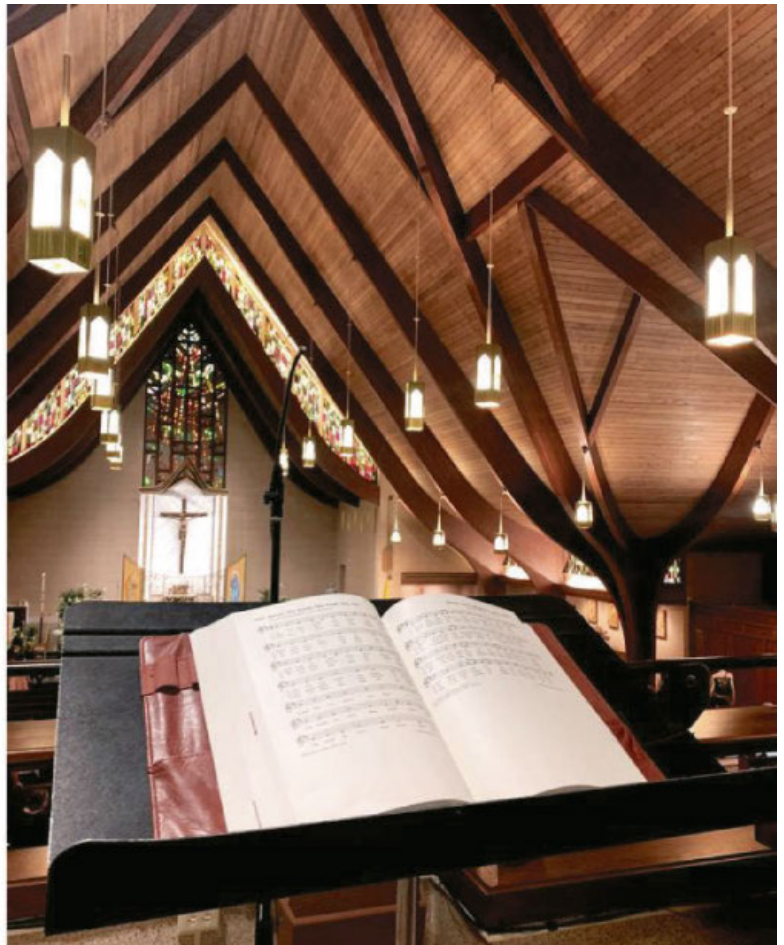
Session I: July 25th-29th, 3-5pm

OR

Session II: Aug 15th-19th, 3-5pm

- Learn about singing chant, psalms, hymns & so much more!
- Vocal coaching from an experienced teacher & professional singer
- Ages 8-17
- Must be comfortable singing alone or in a small group
- Some musical experience a plus!
- Participants will cantor the 10:30am Mass following their session

Contact Julie Huebner for details
jhuebner@stmaryeg.org



COURTESY ANNOUNCEMENTS

MILWAUKEE RETROUVAILLE

Stress in Your Marriage? – Retrouvaille is a program for married couples who feel bored, disillusioned, frustrated or angry in their marriages. Some experience coldness or conflict in their relationships. Most want to make a change, but they don't know where to start. Perhaps you have a friend or family member in this situation? This program has helped thousands of couples experiencing difficulties in their marriage.

For confidential information about or to register for the program beginning with a weekend **July 8-10, 2022** in Oconomowoc please call 414-502-7685 or email: Milwaukee@HelpOurMarriage.org or visit the website at <http://www.HelpOurMarriage.org>.

SAN DAMIANO ENCOUNTER

Calling all high school sophomores, juniors, and seniors! Journey with others in an exploration of who you are and what the world needs from you by attending the San Damiano Encounter, July 24-29 at Cardinal Stritch University. Throughout the week, framed by key events in the life of St. Francis of Assisi, you'll share varied experiences of learning, service, prayer, community and reflection. These experiences will help you to find out how God is calling you, to recognize and develop your leadership potential, and to grow in relationship with God and with others. Join us for a life changing event! <https://tinyurl.com/pyx729j7>.



SUPPORT OUR PARISH

St. Mary's Visitation Parish is grateful for the generous support of our parishioners. We offer many giving options to meet our parishioners needs, as outlined below. Visit www.stmaryeg.org/support-our-parish.html for more information, or contact Cheryl Peters with any questions, cpeters@stmaryeg.org, or 262-782-4575.

ENVELOPES

Parishioners receive packets of envelopes in the mail that are placed in the collection basket at Mass. Includes opportunities for weekly giving as well as Christmas, Easter, Holy Days, special funds, etc. Contact Heidi Steigerwald for changes, hsteigerwald@stmaryeg.org.

ELECTRONIC DONATION OPPORTUNITIES

The methods below provide for automated donations allowing the freedom to give anywhere, anytime, even when traveling — there's no need to worry about a missed collection. If you choose one of these methods and would like to be reminded via email of giving opportunities for Christmas, Easter, Holy Days, special funds, etc. please send an email to donate@stmaryeg.org.

Direct Debit

- Monthly withdrawals directly from a checking or savings account
- Contact Chris Kinzy to setup or make changes, ckinzy@stmaryeg.org

PayPal

- You determine how and when donations are processed
- Setup and make changes yourself on the 'Support Our Parish' page of the St Mary's website

Credit Card

- Monthly donation processed against your credit card
- Contact Cheryl Peters to setup and or make changes, cpeters@stmaryeg.org

Venmo

- Donations made as you request or scheduled from Venmo App
- Download the App and setup donations using @SMV_EG

Give Central

- Website or App
- Giving schedule is setup and altered by donor
- Specials are available as additional, seasonal donations
- Text to give: text the word SUNDAY to 262-393-3447

Jonathan Klicka DDS

890 Elm Grove Rd., Elm Grove
(Located in the Village Court #216)

262-782-6686

TOWN BANK®

A WINTRUST COMMUNITY BANK

Member FDIC 800-433-3076
www.townbank.us

POWERS GOLDSMITH SHOP

"Fine Quality Jewelry Since 1945"

- Certified Diamonds
 - Engagement Rings
 - Custom Designing
 - Appraisal Service
 - Colored Gemstones
 - Wedding Bands
 - Remounting
 - Onsite Goldsmiths
- 14545 W. Capitol Dr., Bldg. • 262-373-0614

Donovan & Jorgenson Inc.

HEATING AND COOLING

Efficient Furnaces • Air Conditioning

(262) 784-6440

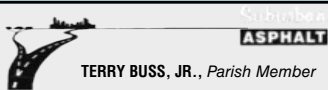
16935 W. Greenfield



For all your heating & cooling needs.

3260 N 126th Street - Brookfield
262.783.6000 • www.grossheating.com

FREE Estimates • 100% Satisfaction Guarantee



TERRY BUSS, JR., Parish Member

tbj@suburbanasphalt.com

11251 W. Forest Home Ave. | Franklin, WI 53132
P 414.425.5353 | F 414.425.6691 | suburbanasphalt.com

Bluemound Bowl

(262) 786-6280

Kids Bumper Bowling Parties
12935 W. Bluemound Rd.

www.bluemoundbowl.com

CENTER FOR WORKING FAMILIES

c4wf.org

Representing

The Working Boys' Center, Quito, Ecuador



More Info, Jim Parks: 414-349-5076



THE ORTHOPEDIC INSTITUTE OF WISCONSIN
Practice Limited to Orthopedic Surgery, Sports Medicine,
Joint Replacement, and Trauma
*CHRISTOPHER J. EVANICH, M.D.,
*Parishioner

3077 N. Mayfair Rd., Suite 100
Wauwatosa, WI 53222

FOR ALL APPOINTMENTS CALL: (414) 384-6700
Fax: (414) 727-1058



BERGHAMMER

Construction Corporation

4750 N. 132nd St.

Butler, WI 53007-0918

262-790-4750

www.berghammer.com

GENERAL CONTRACTING
CONSTRUCTION MANAGEMENT
DESIGN BUILD CONSTRUCTION
Jim Parks - Parish Member

Make your Financial Future a Priority

Call or visit today to schedule your complimentary personal financial review.



Colin Dewey

Financial Advisor

10501 W. Research Dr., Ste. 202

Wauwatosa, WI 53226

414-778-0509

colin.dewey@edwardjones.com

www.edwardjones.com
Member SIPC

Edward Jones
MAKING SENSE OF INVESTING



ADT-Monitored Home Security

Get 24-Hour Protection From a Name You Can Trust

- Burglary
- Fire Safety

- Flood Detection
- Carbon Monoxide

1-855-225-4251



MOVING? Overwhelmed? Call Segues.

The Easier Way to Downsize, Move & Settle In.

SEGUES (sĕg-wāys) Helps Seniors & Boomers Relocate &
Make Smooth Moves & Easy Transitions to their New Home.

Downsizing - Moving - Packing - Unpacking Decorating - Utility Changes

Staging - Cleaning - Estate Sales - Other Personalized Services

Schedule Your FREE Consultation Today! 262-442-4200

Segues Senior Move Specialists www.segues.net



414-406-8876

Women's Support Center

Giving 100% free services to impoverished women

- ♥ Baby supplies & clothing ♥ Pregnancy tests ♥ Ultrasounds
 - ♥ Counseling against abortion ♥ Post-abortion counseling
 - ♥ Natural family planning & breast feeding classes.
- Donate today to help these women in need!

2051 W. Wisconsin Ave. Milwaukee ♥ 414-934-8888 ♥ wsc1212@att.net



Bark n' Scratch OUTPOST

MilwaukeePetFood.com

Shop Online for Free Local
Same Day Delivery on Order Over \$49

We think outside the bag!

5835 W. Bluemound Rd. • Milwaukee, WI

414-444-4110



ROMAN ELECTRIC

Plumbing, Heating & Cooling

Residential Work

640 S. 70th St. 414-471-8565

STOIBER ELECTRIC CO., INC.

Industrial and Commercial Contracting

(262) 782-2226

GROW YOUR BUSINESS

BY PLACING
AN AD HERE!

Contact Jeff Tkachuk
to place an ad today!

jtkachuk@4LPi.com

or (800) 950-9952 x2513

CONTACT US!



DIFFICULTY HEARING T.V. IN CHURCH OR SOCIALLY?

Stop Struggling To Understand. Call Now For A FREE Evaluation!

BS WISNIEWSKI HEARING AID CENTERS

130TH and BLUEMOUND • 262-784-0063 | 49TH and FOREST HOME • 414-321-2020

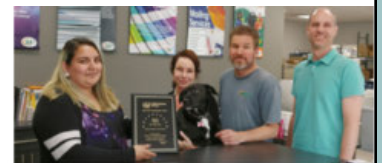
Parishioner Discounts • Board Certified Specialist • www.bswhearing.com



414-257-9500

email: tosa@minutemanpress.com

www.tosa.minutemanpress.com



Nicole Kathy & Chicory Tim Ron

Call or email for a FREE quote on your print project today!

PRINTING • MAILINGS • POSTERS & BANNERS
PROMOTIONAL PRODUCTS • GRAPHIC DESIGN • FREE DELIVERY



Complete Plumbing Solutions

David Strigenz, Owner

262-782-5940

Changing The
Way Elm Grove
Thinks About
Insurance
Since 1984.

Woller-Anger
A Relaton Company

PERSONAL | LIFE | BUSINESS | (262) 789-2500



For ad info. call 1-800-950-9952 • www.4lpi.com

St. Mary, Elm Grove, WI

B 4C 01-0135



Anne Stefaniak Spalholz

Realtor®

262-226-9954

annespalholz@gmail.com

Parish member 28 years



Opening doors to
where you want to be



Tower Chapel
Dining Facility

Becker Ritter
Funeral Home & Cremation Services

262-782-5330
www.BeckerRitter.com
Brookfield



JEM Electric, Inc.

Residential • Commercial

www.jemelectricwi.com

For All Your Wiring Needs

Emergency Service • Free Estimates
JOHN, Parish Member 262-784-6979



PAVING AND CONCRETE
Parking Lot Maintenance, Inc.

262.691.3964
www.plmpaving.com



PHM Orthodontists

Pamela R. Hanson, D.D.S., M.S.

Michael G. Payne, D.D.S., M.S.

Michael B. Melugin, D.D.S., M.S.

Complimentary
Initial Exam

www.phmorthodontists.com

20855 Watertown Rd 262-798-1421
15855 W National Ave 262-784-4050

GROW YOUR
BUSINESS
BY PLACING
AN AD HERE!

Contact Jeff Tkachuk
to place an ad today!
jtkachuk@4LPi.com
or (800) 950-9952 x2513



DARRYL'S TREE SERVICE

(262) 797-8430

Tree Removal • Trimming • Complete Tree Care

Dine in • Bar • Carry out • Catering



13275 Watertown plank rd Elm
Grove, WI 53122
262-821-1511
Silerspurbbq@gmail.com
WWW.SILVERSPURBBQ.COM

Schmidt & Bartelt Funeral & Cremation Service

"Providing Affordable Services at Your
Church or Any One of Our Locations."

10121 W. North Ave. (414) 774-5010



A COMPANY YOU CAN TRUST

414-541-9217

www.genewagnerplumbing.com



FORD LINCOLN
CHEVROLET CHRYSLER
DODGE JEEP
Pentlers

Parish Members Since 1955

414-771-9000 www.uptownautomotive.com



YOUR BROOKFIELD AND ELM GROVE NEIGHBOR

& Low Commission Broker 3.95%

George & Meredith Raab
262.370.7998



See all SE WI
property for sale at:
raabrealtyteam.com

ST. MARY THRIFT SHOP

13150 Juneau Boulevard • 262-784-6644

Open: Mon, Tues, Fri 9am-4pm

Thurs 9am-6pm, Sat 9am-1pm

Closed Wednesday & Sunday

Donations of clothing and
household items gladly accepted

FREE
AD DESIGN

WITH PURCHASE
OF THIS SPACE

CALL 800.950.9952

BRET ACHTENHAGEN'S SEASONAL SERVICES

28 Years of the Finest

LANDSCAPE ARCHITECTURE, CRAFTSMANSHIP & CARE

A PROUD CATHOLIC FAMILY

www.seasonalservices.com 262-392-3444

Place Your Ad Here and
Support our Parish!

Instantly create and
purchase an ad with

AD
CREATOR
STUDIO



4lpi.com/adcreator



15280 W. Bluemound Rd • Elm Grove

One Client. One Trainer. One Goal.™



Brookfield
18000 W Bluemound Rd.
262.289.9860

www.fitnessstogether.com/brookfield

Mike LeDoux, Manager



ROGERS
TREE SERVICE &
YARD CLEAN UP!

Free Estimates
Fully Insured

262-227-9991

Need A Good House Cleaning, But Not Enough Time?

Let Us Help You!

Call or Text Us: 414-367-8900

We provide many
household services
CHECK US OUT TODAY!

geneatownproperties.com
SMV Parish Members



Plumbing - Heating - Air Conditioning - Sewer Construction

262-251-2630

W143 N9358 Henry Stark Rd., Menomonee Falls

www.joebelak.com MP 246187

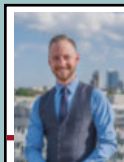
When It Comes to Water One Call Does It All!

S&K PUMP & PLUMBING, INC.

24 HOUR SERVICE • PHONE: (262) 782-7190

20880 W. Enterprise Ave., Brookfield, WI 53045

snkpump.com • service@snkpump.com



BRIAN SCHWEPPE

Realtor®

414.305.0516

BrianSchweppe@kw.com | www.SchweppeHomes.com

205 E Silver Spring Dr. Whitefish Bay, WI 52317



Recommending Aubra Grumley

Senior Loan Officer

Mobile: 414-526-1166

Email: agrumley@boemortgage.com

NMLS ID#: 1013308



Disclaimer: Bank of England is not affiliated with Keller Williams Realty or Schweppe Homes.
Bank of England Mortgage is a division of Bank of England. NMLS 418481. Member FDIC.



For ad info. call 1-800-950-9952 • www.4lpi.com

St. Mary, Elm Grove, WI

A 4C 01-0135