

A MESSAGE FROM STEVE AND BERNIE GRAFF

It is with great enthusiasm and excitement that we write to you about the Faith In Our Future Campaign. We have had the pleasure and privilege of participating in St. Mary's faith community for almost 37 years and four of our children have benefitted from the fine education they received at our parish school. Now we have the opportunity to strengthen the ties that bind this faith community together by uniting in a stewardship campaign and demonstrating faith in our future.



Having been involved at the Trustee and Finance Council levels and in other parish ministries, we know how important this capital stewardship drive is to our parish. Participating in the Faith In Our Future Campaign will help retire our building improvement debt so that we can use our financial resources for other important parish ministries. This campaign also gives us the opportunity to strengthen Catholic education and lifelong faith formation for Catholics throughout the archdiocese, a goal we firmly believe in which is why I am serving as the Major Gift Chair of the archdiocesan-wide campaign.

We invite and encourage you to join us in lending your generous support to Faith In Our Future.

Steve and Bernie Graff

While we have the opportunity, let us do good to all – but especially those who belong to the family of faith. — Galatians 6:10

LIVING AS DISCIPLES

Jesus' final instructions to us during His earthly life was, "Go and teach." For the last 150 years, the Archdiocese of Milwaukee and its parishes have devotedly obeyed this command with educational ministries of exceptional breadth and quality.

Our parish has been a faithful partner with our archdiocese in carrying on our own programs in education and faith formation. Now, as we look with excitement and hope to a grace-filled future, our challenge is to enhance Catholic learning for generations to come. In order for us to meet this challenge boldly, we need to retire our existing debt.

Our current financial obligations are intricately related to the beautiful new atrium and school additions

recently blessed by Bishop Sklba. St. Mary's building campaign, "Trust in the Lord," has provided considerable support for our projects, but it does not cover the entire costs of construction, related improvements and fixtures. The parish secured a loan to finance this difference, and the interest and principal payments are a financial burden.

The sooner we can retire the existing debt, the sooner we can utilize additional resources toward other kinds of discipleship: making school tuition more affordable, expanding community outreach and further enriching the worship, education and service of St. Mary's Visitation and the greater Church in southeastern Wisconsin.



**INVEST IN THE MIND.
ENRICH THE SPIRIT.**

St. Mary's Visitation Parish

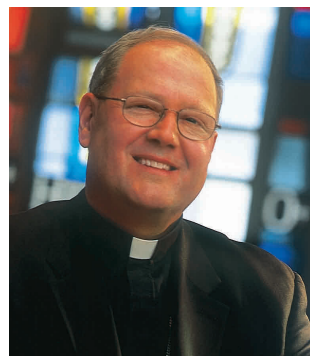
Jesus Christ: the same yesterday, today, and tomorrow.



Dear Friends in Christ,

Our Lord’s final instruction to us at the conclusion of His earthly life was “Go and teach.” For more than 150 years, the Archdiocese of Milwaukee has devotedly obeyed Jesus’ command with an educational ministry of exceptional breadth and quality. Your parish has been a faithful partner with the archdiocese in carrying out these ministries.

Now, as we look with excitement and hope to a grace-filled future, the challenge is to enhance learning for generations to come. Your parish has the opportunity to generate additional resources for both existing efforts, as well as to strengthen your Catholic education and faith formation ministries.



Faith In Our Future, our capital stewardship campaign for Catholic education and faith formation, has been designed with your parish’s needs, and those of our archdiocesan Church, in mind. Since parishes are the heart of Catholic learning, *Faith In Our Future* will direct 60 percent of the funds you raise to your parish. This brochure details how your gifts will be allocated.

The remaining monies will support Catholic education and faith formation with direct subsidies, expanded services, and endowments that benefit our parishes, our schools, our seminary and educational initiatives throughout southeastern Wisconsin. Additionally, a portion of proceeds will support Catholic education and faith formation initiatives of the global Church, especially in mission areas.

More than a campaign to raise critically needed funds, *Faith In Our Future* is a call to renewed stewardship. God has so generously blessed us; He asks only that we give back a portion of His abundance. *Faith In Our Future* is an opportunity to reflect—prayerfully and purposely—on God’s gifts to us and how we might respond to God’s call to discipleship.

This is an exciting time in the life of your parish and the entire archdiocese. May God, the giver of all good gifts, bless you as you reaffirm your commitment to Catholic education and faith formation by supporting this campaign.

Faithfully in Christ,

Most Reverend Timothy M. Dolan
Archbishop of Milwaukee



FAITH IN OUR FUTURE PRIORITIES

STRENGTHENING 211 PARISHES..... \$ 63,000,000

Each parish will develop a Parish Case Statement consistent with the *Faith In Our Future* Campaign priorities of Catholic education and faith formation outlined in Archbishop Dolan’s letter and reflected in the Archdiocesan Initiatives below.

ARCHDIOCESAN INITIATIVES..... \$ 33,000,000

YOUTH EDUCATION AND FAITH FORMATION..... \$22,850,000

- **Catholic School Champions Endowment Fund**\$11,000,000
Scholarships for elementary and high school students who could not otherwise afford a Catholic education.
- **Community Faith Building Endowment Fund**.....\$ 5,000,000
Support catechetics, curriculum enhancement and innovations for parish religious education programs.
- **Catholic Schools Centers of Excellence**.....\$ 6,850,000
Fund to enhance development of best practices and strengthened accreditation standards; enhancement of academic performance and professional development for teachers; and expansion of marketing and development services for all schools. The Fund also provides grants for facility and technology needs.

ADULT AND FAMILY FAITH FORMATION..... \$ 8,500,000

- **Leaders of the Future Endowment Fund**.....\$ 5,000,000
Funding in perpetuity for Saint Francis de Sales Seminary and the John Paul II Center to provide training for young men studying for the priesthood or the diaconate, and formation of adult lay leaders.
- **Living Our Faith Fund**.....\$ 3,500,000
Funding to support adults and families wishing to deepen their knowledge of the faith. The Fund also provides support for marriage, family life, and expansion of Catholic campus ministry at selected public and private colleges.

STEWARDSHIP TO THE GLOBAL CHURCH..... \$ 1,650,000

Recognizing that all we have comes from God and that we are stewards of those gifts, the Archdiocese of Milwaukee will designate a portion of its proceeds to Catholic education and faith formation initiatives throughout the wider Church, especially in mission areas.

FAITH IN OUR FUTURE EXPENSES..... \$ 9,000,000

Campaign expenses include professionally printed and designed materials, video production, all professional consulting fees, all gift acknowledgements, postage and pledge fulfillment over a five-year period for this archdiocesan-wide campaign involving 211 parishes.

FAITH IN OUR FUTURE GOAL..... \$105,000,000

All contributions will be held in the *Faith In Our Future* Trust for the use and purposes set forth in the *Faith In Our Future* Campaign and for no other purposes. This campaign funds Catholic education and faith formation within the Church of southeastern Wisconsin.

OUR MISSION is CLEAR:

WE ARE UNITED AND FOCUSED.

to STRENGTHEN CATHOLIC

WE ARE BUILDING ON A FIRM FOUNDATION.

EDUCATION and FAITH FORMATION

WE FEEL A SPIRIT OF RENEWAL.

FOR the FUTURE of OUR CHURCH.

WE ARE READY TO MOVE FORWARD.



A MESSAGE FROM OUR PASTOR

Dear friends,

“Faith In Our Future.” These words express a two-fold reality: our trust in the future, which is always God’s future, and the place of our Catholic faith in the days, years and decades to come. The early Christians thought that the return of Jesus was right around the corner. When they discerned they would have to wait, like us, they began to plan for “faith in the future.”



We are not alone in faith. We share it with some one million other believers in this part of God’s vineyard. Sharing is the operative word here. The Church is always at its best when we understand and take seriously the gifts that God has bestowed upon us and we share them with others. Just read Acts 2:42-47. When everyone works together, the Spirit increases our numbers and deepens our faith.

St. Paul reminds us that there is a rich variety to the forms of blessing. Part of that blessing includes the “temporal” opportunities that God has given to us. Not all share the same quantity, but all share God’s bounty. “Faith In Our Future” recognizes this, and for this reason “Not Equal Gifts, but Equal Sacrifice” helps set a tone of shared sacrificial giving.

Your participation in “Faith In Our Future” will strengthen educational programs throughout the archdiocese. Children, youth, and young adults will benefit. At SMV, we have the opportunity to pay off the debt of our buildings, structures that make it possible for us to gather for prayer, education and formation, hospitality and friendship. We have been able to enjoy these very visible gifts from God. Just as our founders put their faith in the future of St. Mary’s, now we can share their spirit of trust and sacrifice.

We have been so blessed. Now we have the chance to share that blessing and to deepen it for years to come.

Sincerely yours in the Risen Lord,

A handwritten signature in cursive script, reading "Rev. Laurin Wenig".

Rev. Laurin Wenig

FOUR QUESTIONS TO ASK YOURSELF ABOUT FAITH IN OUR FUTURE

If not this, what? If not here, where? If not now, when? If not you, who?



St. Mary's Visitation Parish

WORSHIP



"United in faith, we live as a prayerful people under the guidance of the Holy Spirit, called to share our gifts through Christian stewardship in our church and world communities. The visible sign of our lifelong commitment is our dedication to worship, education and service in the Roman Catholic Tradition." This is the mission statement of St. Mary's Visitation Parish. Reflecting on the ways we worship, educate and serve helps prepare us to continue and strengthen our commitment to the parish.

The source and summit of our worship at St. Mary's Visitation is the liturgy. Our Sunday liturgies strive to

be reverent, prayerful and inviting. Special liturgies, such as First Communion, Confirmation and the services of the Triduum connect us to one another as the Body of Christ while also allowing us to transcend this world through music and prayer. Our peaceful Perpetual Adoration Chapel invites us to spend time with Christ in an intimate way, and the Family Rosary and Donut Sundays bring us together with prayerfulness and joy. Greeting us as we come to worship and holding us together after Mass, our new atrium invites us to share with each other what we have been given.

As we move forward as a parish community seeking to worship, educate and serve, our current needs are great. To address our long-term needs, the most significant effort we can make at this moment is to pay directly for our recent additions and improvements by repaying outstanding loans and related financing costs.



SERVICE

Catholics can have faith in our future as we continue to serve our parish, local and global communities.

Our deacons and parishioners--men and women, youths and adults--demonstrate a spirit of service in a variety of ways. Some dedicate prayers or visit prisons; many work as volunteer catechists or help raise funds for mission trips; others venture out on those missions, raking leaves for Elm Grove residents or building houses for hurricane victims; a few, nicknamed the "Holy Dusters," spend time cleaning the church; still others visit people who are homebound and bring them Communion or make prayer shawls and meals for families in distress; about 60 families help to make and serve food for the St. Ben's meal program; and those who donate to and volunteer at our Thrift Shop make good quality clothing and goods available to our community at bargain prices.



The eagerness to serve characterizes St. Mary's Visitation Parish. Please carefully and prayerfully consider your role in our parish and in the Faith in our Future campaign.

EDUCATION

The Catholic faith is rich in tradition and wisdom. Each generation inherits the truth of the faith and passes it on. Our parish cherishes its mission to educate and form each of its members. In 2008 our parish joined forces with St. Joseph's Congregation to hire a new team of Catholic Formation staff. This innovative joint approach allows both parishes to offer programming of great depth and high quality at the child, youth and adult levels.

Child Formation offers exciting, new ways to learn about Christ and the Church. While continuing to enhance our weekly Catholic formation program, we will offer several mini-retreats where kids can connect with Jesus in a more personal way. We also invite parents to grow in their faith by synchronizing with adult formation sessions and providing childcare for toddlers.

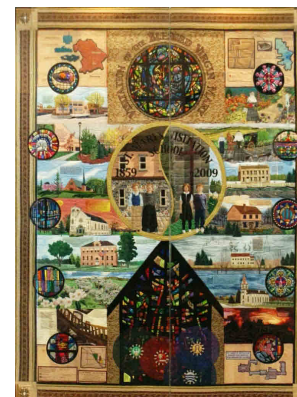
Have you been to the Attic? The Youth Formation program uses this special space to provide social and educational opportunities for our parish's teens. We also have a new website--ypray.org--which guides visitors through the richness of Catholic prayer. Our innovative middle school religious education program offers unique opportunities for our youth, and ongoing formation of our adult catechists will enrich both the middle school and high school



religious education programs.

Through the young adult group ("Lolek") and "Catholicism 101," the Adult Formation program regularly serves over one hundred adults from college age to retirement age. Because the Catholic Formation team works so closely together, we are able to coordinate formation opportunities for adults while children are in religious education classes.

Every parish member can benefit from the educational opportunities of our parish and school. The new atrium and dramatic improvements to the school building energize and enhance these opportunities while giving us space to grow.



St. Mary's Visitation school proudly displays a quilt in its impressive new lobby. This gorgeous quilt depicts the history of the school, 150 years strong and still growing. Not content to rest on past achievements, however, the school is currently engaged in a rigorous self-study to discover new opportunities to strengthen students' formation and academic achievement. The school will also benefit from a newly formed Archdiocesan program, launched by the Academics and Faith Center of Excellence, that trains Catholic formation teams from among the faculty and commissions them to lead adult formation opportunities for school employees.